

This right of way map when recorded is an Instrument of conveyance, transferring in accordance with the Florida Statutes 337.29, all right, title, and interest in the road, street, or highway shown herein, from the Florida Department of Transportation to Martin County.

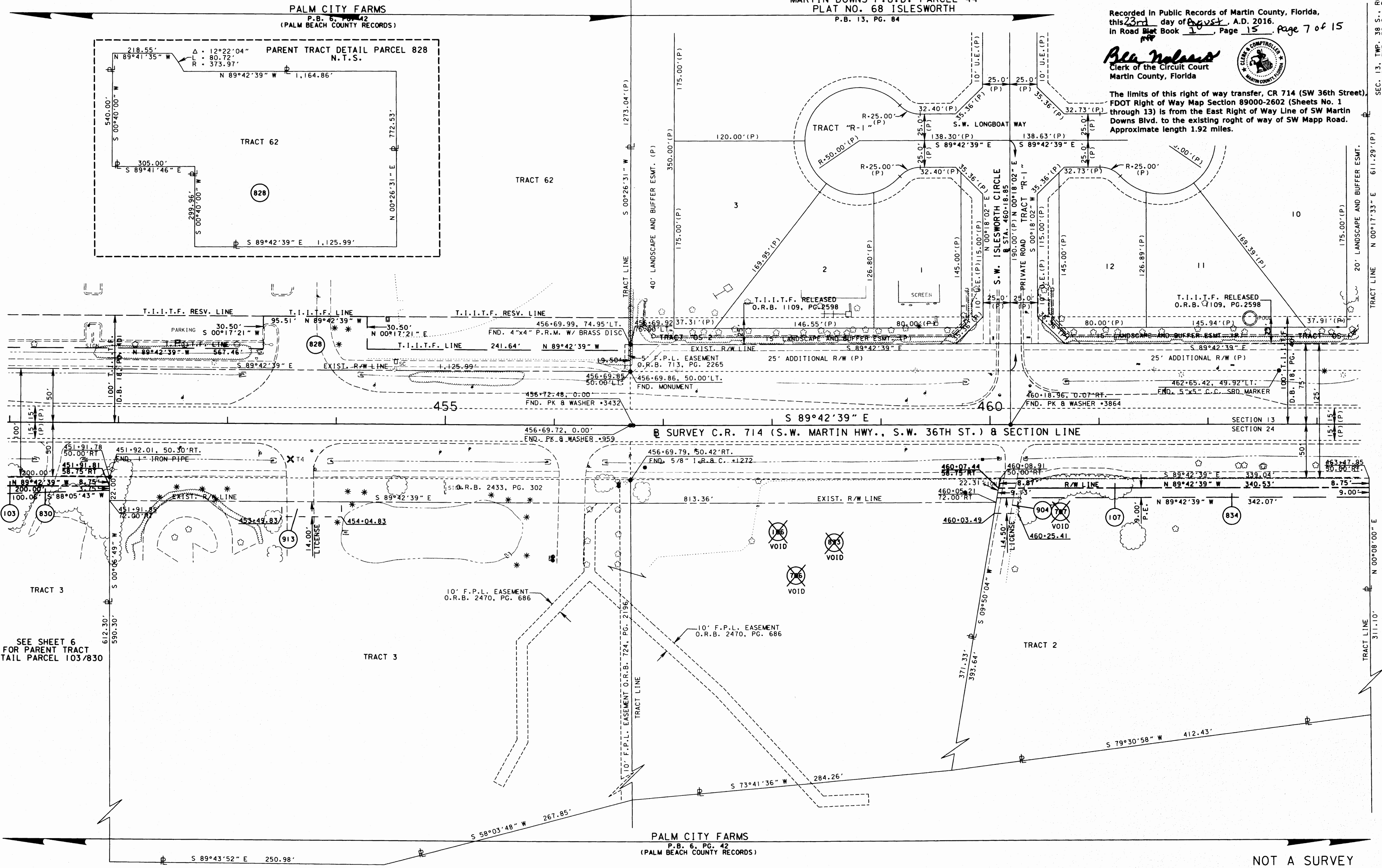
Recorded in Public Records of Martin County, Florida, this 23rd day of August, A.D. 2016, in Road Plat Book 15, Page 15, Page 7 of 15

*Alan Molano*  
Clerk of the Circuit Court  
Martin County, Florida



The limits of this right of way transfer, CR 714 (SW 36th Street), FDOT Right of Way Map Section 89000-2602 (Sheets No. 1 through 13) is from the East Right of Way Line of SW Martin Downs Blvd. to the existing right of way of SW Mapp Road. Approximate length 1.92 miles.

SCALE: 1" = 40'  
SEC. 13, TWP. 38 S., RGE. 40 E.  
SEC. 24, TWP. 38 S., RGE. 40 E.



SEE SHEET 6 FOR PARENT TRACT DETAIL PARCEL 103/830

NOT A SURVEY

SEE SHEET ONE FOR LEGEND AND GENERAL NOTES

C.R. 714 (S.W. MARTIN HWY.) FROM THE FLORIDA TURNPIKE TO S.E. WILLOUGHBY BLVD.

RIGHT OF WAY MAP	FLORIDA DEPARTMENT OF TRANSPORTATION RIGHT OF WAY MAPPING	APPROVED BY	DATE	VOID 706, 707, ADD 904	R. CHAVEZ	08-02-12	BY	DATE	FED. PROJ. NO. SEE COVER SHEET	SECTION 89000-2602	MAPS PREPARED BY	FIELD BOOK NO. 5	
		<i>[Signature]</i>	2/23/09	ADD 713/2365	R. CHAVEZ	08-02-12	PRELIM	DURYEA	04-12-02	COUNTY ROAD NO. 714	MARTIN COUNTY	KEITH B. SCHNARS, P.A.	SEE SHEET NO. 1
		DISTRICT RIGHT OF WAY SURVEYOR		VOID PAR. 106, 833, 1	R. CHAVEZ	07-11-12	FINAL	SANCHEZ	09-30-02		W.P.I. No. N/A	SCALE: 1" = 40'	
				ADD PAR. 913	R. CHAVEZ	04-01-13	ADD SEG. 230978.2	R. CHAVEZ	03-30-12		ITEM/SEGMENT No. 230978.2		SHEET 7 OF 26
				REVISION	BY	DATE	REVISION	BY	DATE	CHECKED	WILHELM	10-04-02	